

# SOMNIUM LATEX AND RESHAPE SONOCORE



HEAD ZONE	SHOULDER ZONE	LOWER BACK ZONE	HIP ZONE		THIGH ZONE	CALF ZONE	FOOT ZONE
Intermediate support area, for the correct support to the head.	Softer area, provided with convoluted surface and triple side perforations, to significantly improve the shoulder cushioning.	Supporting and elastic area, capable of sustaining the lower back.	Controlled hip cushioning is made possible by the drilled cone surface pattern.		Elastic and supporting area, capable of sustaining the body.	Relatively soft area, suitable for supporting calves without compressing them.	Intermediate support level, for proper feet support.

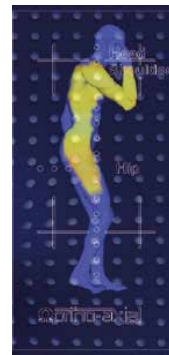
The differing pinhole depths on either side of the structure, in combination with a **reshape® SonoCore**, result in two comfort levels: soft and medium-soft (bi-comfort).



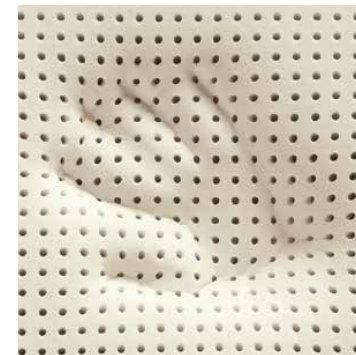
**reshape® SonoCore** combines the benefits of latex created using the new SonoCore process with the properties of viscoelastic foam: it contours extraordinarily to the shape of the body and has exceptional heat regulating properties.

**reshape® SonoCore** reacts to pressure and heat, offering a pleasant sense of wellbeing. It responds quickly to posture changes during sleep.

The shape of the latex core and the molecular structure of **reshape® SonoCore** contribute to increasing the air flow inside the mattress.



**reshape® SonoCore**  
Your body is embraced by the mattress with the sensation of a soft touch. The mattress responds easily to posture changes during sleep.



**reshape® SonoCore**  
It combines latex benefits with viscoelastic foam features.

LATEX MATTRESSES WITH REMOVABLE COVER	
Ergonomic seasonal EMOZIONE	