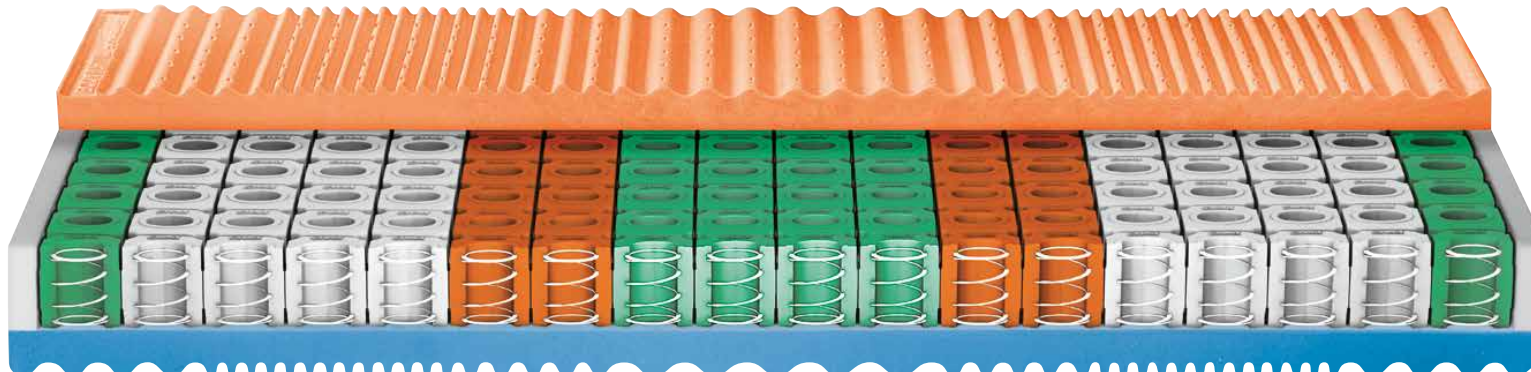


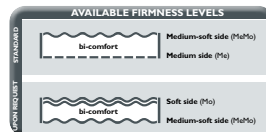
# HELIX ADAPTIVE FOAM SPRINGS WITH BODY FORM HD SOYA & ALOE AND AQUAPURE SOYA

HELIX WITH BODYFORM HD SOYA & ALOE AND AQUAPURE SOYA



HEAD ZONE	SHOULDER ZONE	LOWER BACK ZONE	HIP ZONE		THIGH ZONE	CALF ZONE	FOOT ZONE
The head should always be aligned with the cervical tract of the spine in any sleeping position. This area, particularly elastic, provides the correct support, favouring muscle and spine relaxation, regular blood circulation, and oxygen flow.	The shoulder is the most protruding part of a prone body and it must be accommodated properly, especially for those who sleep on their sides, to allow the spine and the head to maintain a correct posture, facilitating muscle relaxation and blood circulation. To allow the mattress to effectively meet these needs, Helix® adaptive foam springs cells in the shoulder area are softer.	One of the most fragile areas of our body is the lower back region. In this area, Helix® adaptive foam springs cells are firmer and more elastic to support the lower back and encourage correct spine posture.	The heaviest part of our body while sleeping, the hips, should be appropriately embraced by the mattress, however it should not sink too much. Helix® adaptive foam springs cells in this area correctly support the body but are not too firm to avoid unnecessary discomfort.		The lower end of thighs, towards the knees, should be adequately supported to avoid the lower spine from overarch. In this area, Helix® adaptive foam springs cells are particularly elastic and supportive, perfect to relieve pressure on the spinal discs	Calves must lie on a soft surface to prevent excessive compression, one of the main causes of tingling and swelling in the lower limbs.	Lying on an elastic surface, feet can maintain good blood and lymphatic circulation giving a sensation of relief to the whole body.

The differing firmness levels on either side of Helix® adaptive foam springs mattress with Bodyform® HD Soya & Aloe and Aquapure® Soya result in two comfort levels: medium-soft and medium (bi-comfort) or alternatively soft and medium-soft (bi-comfort).



The exclusive Aquapure® Soya e Bodyform® HD Soya & Aloe surfaces in seven variable patterns significantly increase comfort for the whole body. The numerous wide cells in the middle of Helix® adaptive foam springs and the ducts crossing the structure on both sides, together with the Aquapure® Soya e Bodyform® HD Soya & Aloe convoluted surfaces with micro-through pinholes, greatly improve the air flow inside the mattress.

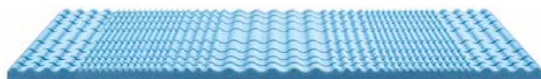
**BODYFORM®**  
SOYA & ALOE



SOMNIUM BODYFORM® SOYA & ALOE



**AQUAPURE®**  
SOYA

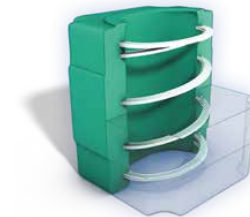


The Bodyform® HD Soya & Aloe element with exclusive wave surface and seven variable patterns provides the correct support of the entire body.

Bodyform® HD Soya & Aloe is an innovative viscoelastic foam, both heat sensitive and self-shaping.

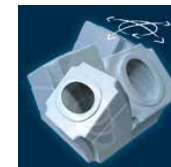
The Aquapure® Soya element with exclusive convoluted surface and seven variable patterns provides the correct support of the entire body.

**Helix®**  
adaptive foam springs

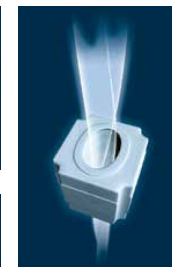


Helix® adaptive foam springs cell cross-section.

Vertical damping



360° adaptive movements



Stable air flow

## HELIX ADAPTIVE FOAM SPRINGS MATTRESSES WITH REMOVABLE COVER

### Ergonomic seasonal

ADHARA with 3D V.S. underlining  
ADHARA with anti-stress underlining  
ALYA  
AZHA  
ALHENA

### Ergonomic hypo-allergenic

MIRAM with 3D V.S. underlining  
MIRAM with anti-stress underlining  
NAOS  
NIHAL