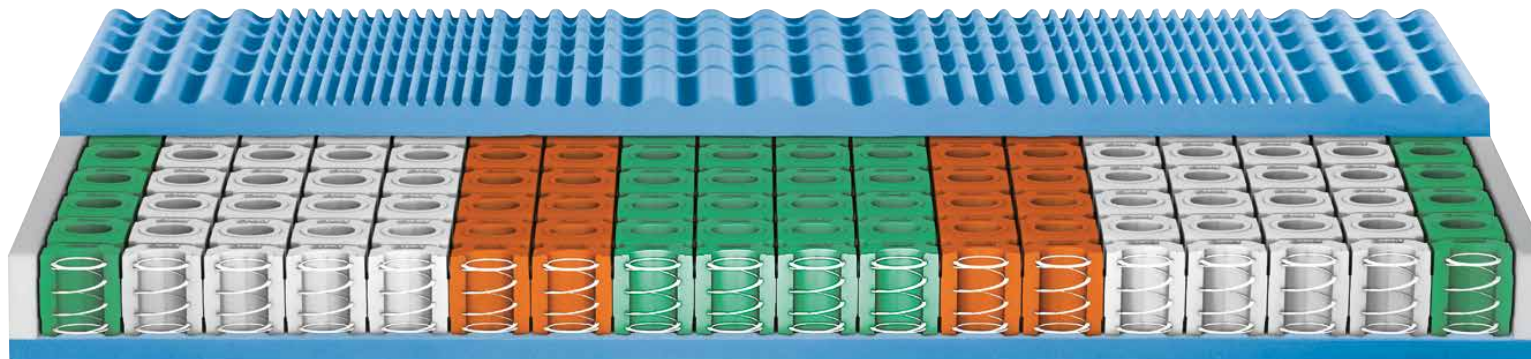


HELIX ADAPTIVE FOAM SPRINGS AND AQUAPURE SOYA



HEAD ZONE	SHOULDER ZONE	LOWER BACK ZONE	HIP ZONE		THIGH ZONE	CALF ZONE	FOOT ZONE
Particularly elastic area, capable of providing the correct support to the head.	Softer area to allow a pleasant accommodation of shoulder for those who sleep on their sides and avoid unpleasant numbness.	Supporting and elastic area, capable of sustaining the lower back.	Progressive zone to correctly support the heaviest part of the body.		Elastic and supporting area, capable of sustaining the body.	Moderately soft area, suitable for supporting calves without compressing them.	Elastic zone, to promote adequate blood circulation.

The differing firmness levels on either side of the **Helix® adaptive foam springs** mattress with **Aquapure® Soya** result in two comfort levels: medium and medium-firm (bi-comfort).



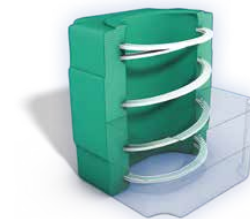
The exclusive **Aquapure® Soya** convoluted surface in seven variable patterns significantly increases comfort of the whole body. The numerous wide cells in the middle of **Helix® adaptive foam springs** and the ducts crossing the structure on both sides, together with the **Aquapure® Soya** convoluted surface, greatly improve the air flow inside the mattress.

AQUAPURE SOYA



The **Aquapure® Soya** element with exclusive convoluted surface and seven variable patterns provides the correct support of the entire body.

Helix
adaptive foam springs

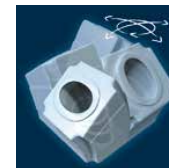


Helix® adaptive foam springs cell cross-section.

Vertical damping



360° adaptive movements



Stable air flow

HELIX ADAPTIVE FOAM SPRINGS MATTRESSES WITH REMOVABLE COVER	
Ergonomic seasonal DENEb	Ergonomic hypo-allergenic POLARIS