

NOTTURNO

Ergonomic seasonal mattress with removable cover



NOTTURNO with 3D V.S. underlining OR with antistress underlining

This mattress is suitable for those who feel very hot and/or cold in bed, have excessive sweating (3D V.S. underlining is particularly suitable), are overweight (exceed their ideal weight by 5/10%), sleep on their side or in other positions (particularly suitable), wish to use an adjustable base, suffer from neck and/or back pain (particularly suitable), have peripheral blood circulation issues (particularly suitable), are subject to electromagnetic pollution (only anti-stress underlining version), want a mattress with differing comfort levels on either side (bi-comfort), want a different comfort level than their partner, have a particular need to remove the mattress cover.



Pillow Top Plus - REMovable®
(patent n. 102016000021487).
Exceptional comfort
and thermo-regulating properties.
Perfect air permeability.
Removable cover.



Bodyform® HD
is an innovative viscoelastic foam,
both heat-sensitive
and self-shaping.



ACTION®
Technical fibre mix
created for the warm
periods of the year.



With **3D V.S. fabric underlining**,
ventilation improves
thanks to the peculiar air gap.



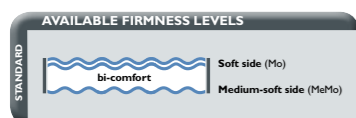
With the **carbon anti-stress**
underlining, electromagnetic waves
and static are discharged.



The **3D V.S. fabric** perimetral insert
facilitate ventilation
inside the mattress.



The **bi-comfort** feature
allows you to choose
between two comfort levels.
Even between partners
on a double bed.



STRUCTURE



Aquapure®
Aquapure® core with
seven comfort zones
and differing density
on either side.
The addition
of **Bodyform® HD**
provides the mattress
with both soft and
medium-soft comfort levels
(bi-comfort).



Bodyform® HD
Bodyform® HD
component, convoluted
surface with seven comfort
zones and micro-pinholes.

UNDERLINING

3D V.S. underlining version

3D V.S. fabric
3D Ventilation System
fabric underlining
with non-compressible
air gap.

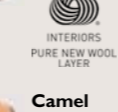
Anti-stress underlining version

Anti-stress fabric
Anti-stress underlining
made with carbon yarns,
arranged in a lattice
pattern on the fabric.

COVER



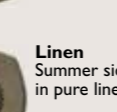
Merino wool
Winter side
padding in pure
Merino wool.



Camel
Winter side padding
enriched with pure
camel wool.



Cotton
Summer side padding
in pure cotton.



Linen
Summer side padding
in pure linen.



Anti-condensate fibres
Heat-bonded fibres form
a resilient and air
permeable weave.
Inserted between a cotton
layer and a linen layer.



3D V.S. fabric
3D Ventilation System
internal layer,
with non-compressible
air gap.



Cotton blend fabric
Dri-release™ cover in
double elastic fabric with
patented co-polymeric yarn,
mixed with cotton.
Freshguard™ anti-smell
treatment.



3D V.S. permeable band
Double **3D Ventilation System**
air permeable
band on the mattress
perimeter.



Removable cover
Four-sided sturdy
zipper.



Dry-clean
The cover can be
dry cleaned.

